



## ESI[tronic] 2.0 Online

News 2023 | 3

- Breaking News – ESI[tronic]
- Secure Diagnostic Access: Volvo now part of SDA
- Quickly determine and print out condition of high-voltage batteries (SOH)
- Improved system search:  
An overview that's even faster
- Coverage for the newest vehicles on the market
- ESI[tronic] Parts Online
- ESI[tronic] Truck News



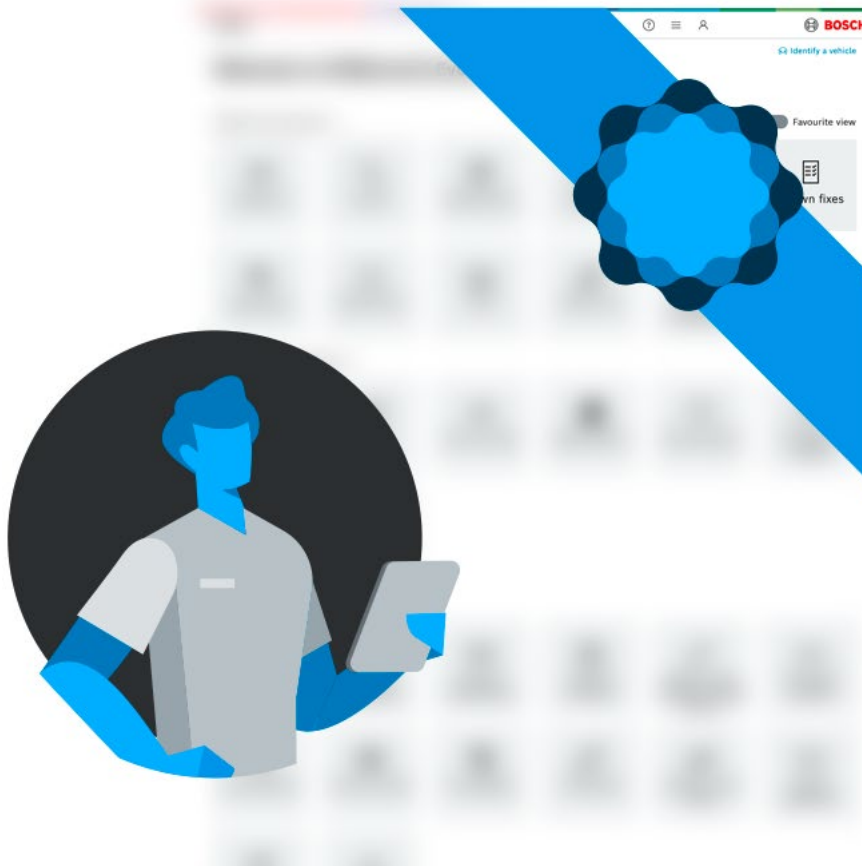
# Breaking News – ESI[tronic] gets easier, faster, and better!

In the coming updates, we will begin making a series of changes to ESI[tronic]. Our beloved Software deserves to get faster, better to look at, and easier to use. In order to reduce wait time, we will develop these changes in successive packages and integrate them into ESI[tronic] step-by-step.

We will start with the 2023/4 update, which will introduce a new start screen into ESI[tronic]. It will allow direct access to many of the main ESI[tronic] menus and submenus and will save a significant amount of time. You will be able to personalise the start screen with your favourite or most-used functions and features.

The start page features a modern design and clear presentation that will make it even easier to find required content in the future. A new Vehicle Identification makes selecting cars even easier than it is currently.

ESI[tronic] is transforming and we are looking forward to starting this journey together with you. Please feel free to share your opinions and ideas about the new ESI[tronic] with us. Just send us an ESI ticket. Thank you for choosing ESI[tronic] diagnostic software.



## Secure Diagnostic Access: Volvo now part of SDA



Integrating the Secure Diagnostic Access (SDA) solution into ESI[tronic] 2.0 Online's ECU diagnostic license (SD) enables full access to a comprehensive set of protected vehicle data from participating vehicle manufacturers, which is constantly being expanded with more makes and models.

The updates "2023/2 Service Pack 3" and 2023/2.08 from the beginning of July gave ESI[tronic] 2.0 Online the functionality to unlock access-protected Volvo vehicles quickly and easily.

Their initial focus will be on providing service-relevant vehicle coverage, followed by driver assistance systems. Coverage is continuously being expanded and more protected vehicle coverage will be provided.

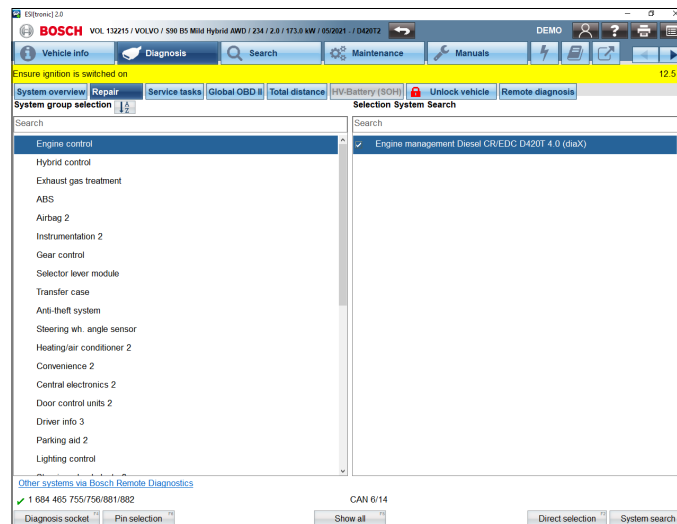
The Volvo SDA solution does not require any special process steps to use. Technical factors make registration with SingleKey ID unnecessary and there are no additional costs for users.

Although SDA already contains an impressive range of vehicle brands, the list is growing continuously. A solution for Nissan vehicles is already in the starting blocks and is due to follow later this year.



## Please note:

In some control units of new Volvo models, the fault memory can only be erased in the control unit network. This change was introduced by Volvo and concerns control units that could contain OBD-relevant faults in areas such as engine and transmission control. The procedure for erasing fault memory remains unchanged for ESI[tronic] users. SDA protected vehicles must be unlocked again after deleting the fault memory in the control unit network. This is indicated by a red-coloured lock symbol. To unlock, use the "Unlock vehicle" tab.



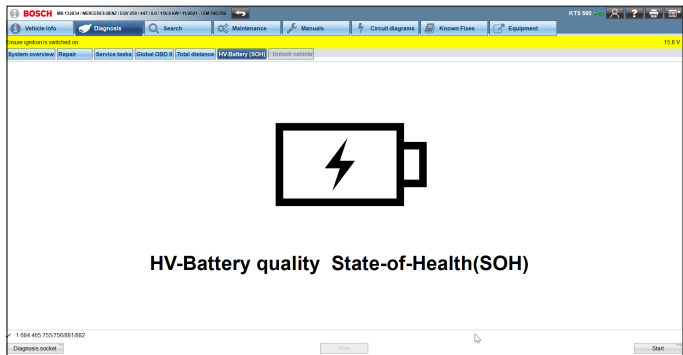
# Quickly determine and print out condition of high-voltage batteries (SOH)



The high-voltage batteries that power electric or hybrid vehicles are subject to aging and the corresponding loss of storage capacity. Some manufacturers therefore provide high-voltage battery diagnostic data, known as the State of Health (SOH).

ESI[tronic] 2.0 Online update 2023/3 makes the new "HV battery (SOH)" tab available in the ESI[tronic] Navigation interface under diagnosis. If vehicle manufacturers provide corresponding data in the HV battery management system, users will be able to read them using a special test step and then them print them out if they wish.

The state of health of high-voltage batteries is expressed as a percentage value compared to new batteries. Workshops are able to print out ESI[tronic] SOH reports in order to provide vehicle owners with specific data related to their high-voltage batteries.



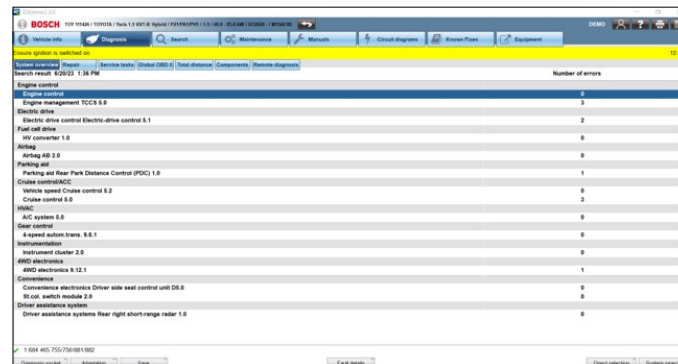
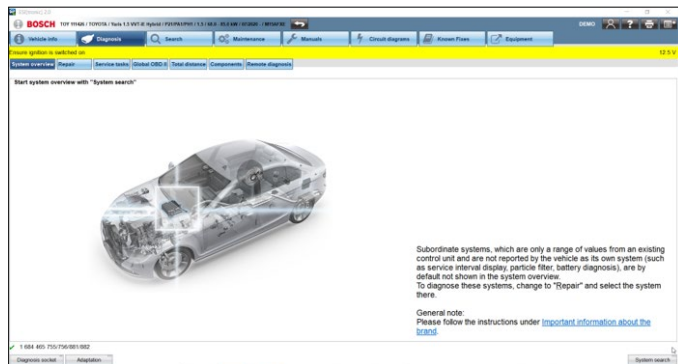


## **Improved system search: An overview that's even faster**

The number of control units and electronics in vehicles is constantly increasing. The system overview is designed to give ESI[tronic] 2.0 Online users simple access to a general overview of installed systems and existing faults.

Update 2023/3 improves the speed of the system overview for many makes significantly. Every system installed in a vehicle will be displayed along with every fault within a maximum of 30 seconds of starting system searches. In some cases, this 30 second requirement means that ESI[tronic] is even faster than the manufacturer's own tester.

This ultra-rapid system overview is available for newer models from makers that include Mercedes Benz, Toyota, Renault, and Ford. Many more makes and models to follow.







# Coverage for the newest vehicles on the market

Our efforts to provide customers with ESI[tronic] 2.0 Online coverage for the newest vehicles on the market continue full steam ahead. Below is a just a short list of the vehicles we made available to ESI[tronic] 2.0 Online users within mere weeks of their market launch:

**BMW X5 (RB key: BMW0145603, BMW0145605, BMW0145606, BMW0145663)**

Market launch: April 2023

Availability in ESI[tronic]: May 2023

**BMW X6 (RB key: BMW0145628, BMW0145629, BMW0145630)**

Market launch: April 2023

Availability in ESI[tronic]: May 2023

**VW ID3 (RB key: VWW0144380, VWW0144381)**

Market launch: April 2023

Availability in ESI[tronic]: May 2023

Initial coverage focuses primarily on service and repair of core systems and functionality. New vehicles and enhancements will be included as part of regular Diagnostics Download Manager (DDM) updates.



# ESI[tronic] Parts Online

Bosch's new ESI[tronic] Parts Online web application enables users to view all of the Bosch equipment and parts they need quickly and easily, including via web browser. The application provides the same rapid access to important data that customers have come to know from ESI[tronic] Online 2.0. They include parts information, the complete Bosch spare parts catalog including spare and replacement identifiers, service information, assembly instructions, and component repair instructions (information types A, D, E, and K). ESI[tronic] Parts Online replaces the ESI[tronic] Classic WTS solution.

**ESI[tronic] Parts Online includes all the advantages of ESI[tronic] Classic WTS and many more:**

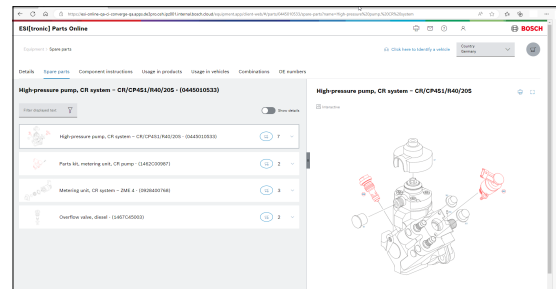
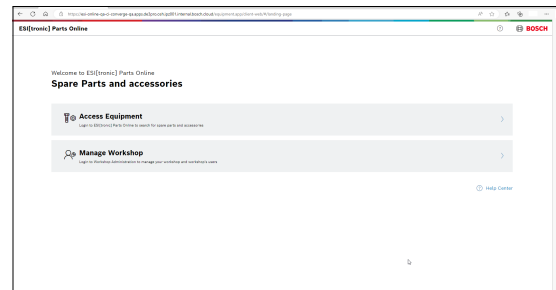
- It is a pure web application
- No installation is required
- Updates run automatically in background
- Only an internet connection and browser are required
- Data is always up-to-date
- Uses identical reporting and data as ESI[tronic] 2.0 Online ("Equipment")



In order to gain access to ESI[tronic] Parts Online, you must have a valid ESI[tronic] 2.0 Online license (A, D, E and/or K).

Use the [www.bosch-esitronic.com/parts](http://www.bosch-esitronic.com/parts) landing page to login to either the Access Equipment or Manage Workshop tools (assign employees incl. SingleKey ID).

A shopping cart function makes picking, exporting, and ordering parts via the DMS even more convenient. Now there's nothing standing in the way of efficient maintenance and repair.





## ESI[tronic] Truck News

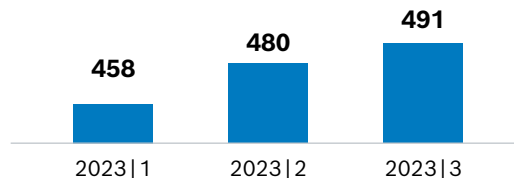
ESI[tronic] Update 2023/3 will give our customers access to:

- 11 new makes
- 423 new models
- 1,873 new electronic control systems
- 1,806 new diagnostics capabilities
- 110 new wiring diagrams
- 16,007 new fault codes

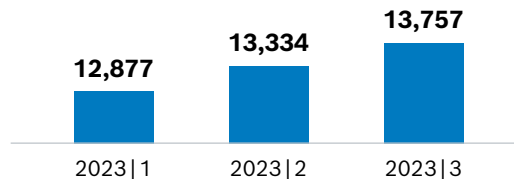
Stay up-to-date!

**Find out more about ESI[tronic] Truck at:**  
[www.boschaftermarket.com](http://www.boschaftermarket.com)

### Makes total



### Models total





Bosch Diagnostic Solutions enable comprehensive, reliable maintenance and repair on a wide range of commercial vehicles.

### **Software**

Workshops can select the following data packages and combine them as desired:

- Trucks Package (light and heavy commercial vehicles, trailers, transporters, buses)
- Agricultural Machinery Package (OHV 1)
- Construction Vehicles and Engines Package (OHV 2)

### **Hardware**

Robust, workshop-ready hardware – for effective diagnostics.

- KTS Truck – VCI (connects to DCU 120/220 or any common PC)
- KTS 900 Truck – VCI + PC (comprehensive solution including KTS Truck and DCU 220)
- Adapter cables
- Manufacturer-specific adapter cables